

Member's Classifieds

Richard Crosland's School of Fine WoodWork

Learn with the master. Richard Crosland's School of Fine Woodwork operates small, hands-on classes for students of all levels.



The friendly, creative atmosphere fosters rapid progress and many beautiful pieces are the lasting result.

All tools provided and work in progress can be stored at the Alexandria workshop.

Call Richard at the school: 9313 4142

"USER" BEDROCKS--Fettled Stanleys Repairs and Service

Academy HSS Irons
G15 Rust Preventative
Trade Prices on:
DMT Diamond Plates
King Waterstones

Jim Davey 4447 8822(w)
4447 8790(ah)
JDAVEY@bigpond.com



Terry Gleeson furniture maker and woodwork teacher

1191 Old Northern Road
Middle Dural, NSW 2158
Phone: 02 9651 1012
Fax: 02 9651 1341
e-mail: thechairmaker@ozemail.com.au



Timber and Working With Wood Show Gallery Competition Update

With apologies to the following members:
Ian Stewart took second place in Open Novice with a side table.
Dean Hannah third place, also in Open Novice, with a knife block.

Well done to both members.

I would also like to thank Ian and Dean for their gracious kindness to me in regard to my omission in the last newsletter.

Kim Larymore

Aims of the Woodworkers Association of NSW, incorporated

- To foster creativity and the pursuit of excellence in the crafting of the wooden form.
- To provide a forum for the exchange of expertise and to foster camaraderie among those who work in wood.
- To provide for the networking of information and material supply.
- To promote public awareness and appreciation of this work.
- To be a respected voice concerning the management of our precious native timber resources and to promote best practice in land management.

Membership is open to anyone interested in woodworking, both amateur and professional. The Association meets every second month: the first Monday of every even month.

From the Chair

Welcome to the new members listed elsewhere in the Newsletter. I hope you find the meetings and the Newsletter enjoyable and informative.

The guest speaker at the October meeting is Tom Harrington, Director of Sturt School for Wood at Mittagong. Tom is an accomplished designer/maker, teacher and Director of Sturt School for Wood in Mittagong. I think everyone will have something to learn from Tom's vast experience in woodwork and design. There will also be a special "Show and Tell" with Dean Hannah.

It is pleasing to see WWA members and their work in the latest issues of Australian Wood Review (No 48), The Australian Woodworker, and Arts Crafts International (No 64).

Evan Dunstone joins the long list of WWA members to grace the cover of Wood Review. The article, which shows the tenacity required for anyone contemplating earning a living from fine woodworking, is a must read for any aspiring professional woodworker and an interesting read for everyone else.

The article on Leon Sadubin's work in Arts Crafts features the four-year commission for Mrs Abela which was the subject of Leon's presentation at the February meeting. Unfortunately I missed that meeting so I really appreciated being able to read the article and see images of the furniture.

Arts Crafts No 64 also has a very interesting article by WWA member Rodney Haywood on furniture design (see below)

Design and Fine Woodwork

One of the often-stated aims of the Association is to promote fine woodwork. While construction methods have remained relatively unchanged for centuries, design continues to evolve to reflect contemporary use, attitudes to resources and space, and style. Curiously the aims of the Association are silent on "design".

While "design" may be integral with fine woodwork (or as per the aims: "crafting of the wooden form"), the absence of design as a specific aim can (and probably has) lead to complacency. In a much more design conscious age we need to continually challenge ourselves if we are to remain relevant and fulfil our stated aim of promoting fine woodwork including public acceptance and appreciation of this work.

The significance of design is illustrated in the latest edition of Australian Wood Review where there is an article on 14 Tasmanian designer/makers who were invited to re-interpret selected antique English furniture.

The Tasmanian designer/makers were asked to design essentially the same piece of furniture relevant to current function and contemporary design. Craftsmanship was a given. What made each piece stand out was the unique design, in terms of function, structure and, the most elusive of all, the creative/visualisation aspect of design. I was particularly impressed with Laura McCusker's re-interpretation of a modern day vanity unit. Clean contemporary form and line to serve 21st Century functionality.

The article by Rodney Haywood in Arts Crafts explores breaking the convention of unnecessarily oversized components in contemporary furniture, which is made possible by the strength, stiffness and hardness of Australian hardwoods. The visualization aspect of design is also pronounced in the images of work by a number of designer/makers including WWA member Jeff Freeman and Tom Harrington, our next guest speaker.

Exhibitions

Some groundwork has recently been laid for holding exhibitions of members work to promote fine woodwork. Each possible avenue is yet in its embryonic stage at the moment but hopefully we can have some more news early in the New Year. Meanwhile, the Committee encourages members to enter the Victorian Woodworkers Association's exhibition Woodworks 2005 which will be a major national exhibition. Further details are in the Newsletter.

Member Survey

At the June meeting members overwhelmingly supported a survey of member's interests and expectations of the Association. A questionnaire is included in this issue. The results will be used to plan future meetings and other activities. Please take the time to complete the form and bring it to the October meeting or post it to Peter Hunt at the address on the form.

Hope to see you at the meeting.

Warwick Wright

The WoodWorkers' Association of New South Wales Inc.

Correspondence to 41 Harley Cr. Eastwood NSW 2122

Chairman: Warwick Wright (02) 9555 7960
e-mail: warwick@grainwoodworks.com.au
Vice Chair: Paul Barton (02) 9608 8195
e-mail: paullbarton@bigpond.com

Secretary: Ian Factor (02) 0411 35 44 00
PO Box 293, Milsons Point NSW 1565 e-mail: ianfactor@optusnet.com.au

Treasurer: Ross Conran 0402 905 045 e-mail: DifferentByDesign@bigpond.com

WebMaster/Photographer: Kanna e-mail: kanna.wood@optusnet.com.au

Membership Secretary: Geoff Billingsley (02) 9449 4141 (0417 652 436)
Membership fees to 119 Collins Rd St Ives NSW 2075 e-mail: geoff@billingsley.com.au

Editor: POSITION VACANT

Editorial Assistant: Frank Duff (02) 9896 4017
Hard copy to 41 Sherwood St, Old Toongabbie NSW 2146 fwduff@optusnet.com.au

Public Officer: David Buick (02) 9557 5799
e-mail: pabuick@idx.com.au

"Exhibitions Coordinator: Robert Chapman (02) 4271 1599
robertchapman@contemporaryfurniture.com.au

Committee Members:

Kim Larymore (02) 9858 1578 larymore@tpg.com.au
Geoff Billingsley (02) 9449 4141 (0417 652 436) geoff@billingsley.com.au
Frank Duff (02) 9896 4017 fwduff@optusnet.com.au
Phil Lake (02) 9518 4150 philjanlake@yahoo.com.au
Conal Downey (02) 0407 767 800 conaldowney@aol.com
Peter Hunt (02) 9369 1193 p_j_hunt@msn.com.au
Chris Redondo (02) 0405 983 672 ingnews@ozemail.com.au
George Bambagiotti (02) 9817 4327

Newsletter Advertising: POSITION VACANT

Opinions expressed in articles in this newsletter are not necessarily those of the editor or the committee of the Woodworkers Association of NSW.
Contributors are requested to submit all articles via e-mail or CD, wherever possible.
Photos and discs should be accompanied by a stamped, self addressed envelope to ensure prompt and safe return.

Our Website: <http://woodworkersnsw.org.au>

NEXT MEETING

MONDAY 10 October

Guest Speaker

Tom Harrington

Director of Sturt School for Wood at
Mittagong. Tom is an accomplished
designer/maker and teacher.

Everyone will learn something from Tom's
vast experience in woodwork and design.

"Show and Tell"

with Dean Hannah.

AT

Your Workshop

**Unit 2, Building 5, 75 Mary Street,
St Peters 02 9519 1234**

**from 7pm for a 7.30 start
until 9.30pm**

**\$4.00 member's meeting fee
with lucky door prize.**

(visitors welcome - 1st visit free!)

or visit <http://woodworkersnsw.org.au>

The Woodworkers Association of NSW
encourages members to enter
Victorian Wood Workers Association

WOODWORKS 2005

Exhibition and Awards in three categories

- o **Create from a Crate:**
- o **Touchwood:**
- o **Start:**

2nd to 18th December 2005, Melbourne

Entries close 31 October 2005

To encourage members to enter and to take the hassle out
of the logistics of transporting your work to Melbourne we
will arrange transport plus insurance if required.

For entry forms and expressions of interest contact:

Warwick Wright (02) 9555 7960

Rob Chapman (02) 42711599

For full details see:

<http://www.vwa.org.au>



TREND TIMBERS PTY LTD
SPECIALISTS IN FINE WOODS

Trend has enjoyed an association with the Woodworkers
of NSW, dating back to your earliest exhibitions in Martin
Place & the Opera House. We appreciate the skills and
dedication of your members in their production of high
quality hand made furniture. Your exhibitions and support
for some of the high quality furniture outlets has helped to
promote the industry in NSW and we congratulate you.

WOOD

is a renewable resource

And here at Trend Timbers we stock it and back our product!
Deliveries daily to Sydney!

Please phone Adrian, Andrew, Melanie, Richard

Ph: 02 45 775 277 Fax: 02 45 776 846

Email: trend@jigsaw.net.au Website:

www.trendtimbers.com.au

Woodcarving, Sculpture and Furniture

the Otto family business—Sydney—1951 to 2005 and counting

Laurens Otto is descended from a long line of woodcarvers who migrated from Leiden in Holland, setting up their workshop in Botany St, Randwick in the early 1950s, starting with brothers Peter and Frank, followed by their father Pieter aged 70 in 1956.

Pieter senior arrived by boat at Woolloomooloo on a Friday and was at the workshop on the following Monday. He then worked at the bench six hours a day for the next 17 years before retiring. He designed for another four years and lived to 94.

Laurens started work in the Randwick workshop in 1963, by which time they could only just keep up with the demand from all the traditional furniture makers in Sydney and NSW, plus all the private commissions they were doing: tables, mirrors, fireplace surrounds, coats of arms, Church work etc.

In the late '60s he watched his father and uncle make the Australian Coat Of Arms for the old Commonwealth House of Representatives. Ten years later, after moving to Surry Hills and then to Kingsford, he worked with his father Peter for almost four months on another Australian Coat Of Arms for the new High Court in Canberra where they both were presented to Queen Elizabeth at the official opening ceremony in 1980.

In 1988 Laurens worked on the wildflower carvings around the top of the Australian Coach which was presented to the Queen

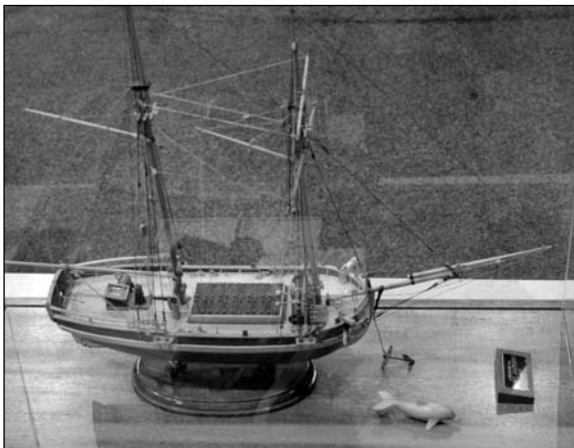
at Government House in Canberra. The carriage is now housed at the Royal Mews London. In 2004 Laurens finished the carvings for the new Coach Britannia which is nearing completion in Sydney.

In the early '90s Laurens worked with his father on an Eagle Lectern for St John's Church of England in Glebe. This 440-hour project was their last together - Peter retired in 1995 due to ill health and passed on aged 80 in 1998. Frank Otto also retired in the late '90s.

Since 1990 Laurens has been designing and building on of pieces of furniture for sale and exhibition. He also does commissioned work, restoration, and teaching.

The Otto & Son Woodcarving School was started in 1976 at Addington in Ryde and, after a few moves and breaks, is now located in the inner city at 131 Queen St, Beaconsfield. Laurens has taught extensively in NSW and Qld for 28 years. He runs small classes (maximum six) for beginners to advanced students. There is no set course as each student is catered for individually in whatever direction they want to go in, be it decorative furniture carving or abstract sculpture. Weekly classes are a hands-on learning experience as well as a lot of fun.

Family notes by Laurens Otto



Two more member's pieces from the 2005 Timber and working with Wood Show.

Left: fine model boat by George Bambagiotti

Right: multi curved chest of drawers, Ray Lobb.



SPECIAL TIMBERS

We carry a large range of specialist cabinet timbers.

Please phone us for a price list

**144 Renwick Street,
Marrickville, NSW 2204**

Tel: (02) 9558 8444

Fax: (02) 9558 8044

New (and returned) Members

We welcome the following new members (plus one or two returning to the fold), who have joined the association during the last couple of months

Michael Barnet	David Davenport
Evan Dunstone	Lachlan Giddy
Tony Ward	Peter Harris
Simon Haynes	Hugh Jones
Mick Kinsella	Graham Levin
Takashi Nishiura	Alex Springall
Merv Walter	Matthew Harding
Michael Wilson	Elizabeth McKenzie

I hope that each of you will be able to attend our forthcoming meeting and that you will go on to gain great benefit from, and in turn contribute to, the Woodworkers' Association.

Geoff Billingsley
Membership Secretary

Native Timbers put on Show

A new competition for woodworkers was staged as part of the **2005 Timber and Working with Wood Show** held in Sydney in June.

Forests NSW sponsored the **Putting Timbers on Show** competition that gave woodworking students and enthusiasts the opportunity to gain public recognition for their gifted woodworking talents.

'It was the biggest and best show so far and the competition entries provided a great centre piece,' wood show event coordinator, Lucy Foord, said.

Forests NSW sponsored a successful woodworking competition as part of the 2005 Timber and Working with Wood Show in Sydney.

Eighty woodworkers entered the twelve competition categories that included sculpture, woodturning and toy and instrument making.

Kim Larymore of the NSW Woodworkers Association said

that it was great to see so many of the entries created from Australian timbers, as more and more woodworkers discover the great qualities and superb grains of native timbers.

Members of the Woodworkers Association took out five prizes including all three prizes in the furniture-making section. John Bassell's blanket box won first prize, with tables made by David Eden and Paul Barton taking second and third.

Forests NSW display at the show allowed visitors to contemplate some of the often less thought-about benefits of State forests, including carbon sequestration and salinity amelioration, in addition to hints on how to identify wood types.

Many woodworkers had never seen wood under a microscope and were interested to learn the difference between hardwoods and softwoods.

Forest NSW staff enjoyed talking to visitors and knowledge was flowing in both directions between staff and show goers.

Two Workshop Visits

Saturday - 22 October 2005

Rob Chapman Contemporary Furniture (Ph 4271 1599)
5/20 Doyle Ave, UNANDERRA 2526

Directions: Exit the Southern Fwy at Northcliffe Dr (turning right towards NW); Turn right onto the Princes Hwy; and right again into Doyle Ave.

See Whereis OnLine map, a fully functional on-line directory:
<<http://www.whereis.com:80/whereis/mapping/emailedMap.do?maplinkId=216142&brandId=1>>

and

Leon & Ginny Sadubin (Ph 4464 2600)
36 Wattamolla Rd WOODHILL (via BERRY) 2535

Directions: From Sydney via Wollongong
On the outskirts of Berry, pass the motel then over a small bridge and turn right into Woodhill Mountain Rd. Drive up the escarpment for 7km. Turn left into Wattamolla Rd. Go downhill 360m and turn right into our drive.(No.36). There is room for only six cars, so once the front gate is closed, please park on grass verge of Wattamolla Rd.

Leon says: Please bring wet weather gear if the forecast is uncertain, as we cop the elements in large servings here on the mountain.

See Whereis OnLine map:

<<http://www.whereis.com:80/whereis/mapping/emailedMap.do?maplinkId=216187&brandId=1>>

PLEASE NOTE: We plan to finish at Rob's in time to reach Leon's for lunch. Rob suggests we take a packed-lunch and sit on Leon's lawn (please bring your own food & drink). Leon will crank up the BBQ for a sausage sizzle.

Proposed timing:

Arrive at Rob's - 11 am — Leave Rob's - 12.15 pm
transit time — 45 mins Arrive at Leon's — 1.00 pm
Normal WWA Visit fee (x2) will apply.

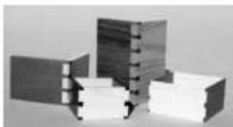
Sturt 2005

Three pieces created by Sturt graduating students. Top to bottom: John Gallagher, Paul Nicholson and Phil Gould.



GIFKINS DOVETAIL JIG

FOR PERFECT DOVETAIL JOINTS ON ANY ROUTER TABLE



The simplicity, the ease of use and the safety aspects are all reasons why so many woodworkers and schools are choosing the Gifkins Dovetail Jig in preference to other jigs.



Roger & Jenny Gifkins
619 Belmore River Rd KEMPESY NSW 2440
Ph 02 6567 4313 Fax 02 6567 4681
Email gifkins@midcoast.com.au
www.gifkins.com.au
Phone for FREE brochure

Simple to adjust – easy to use

The last meeting August 8 2005

The recent bi-monthly meeting of this Association was deferred to the 8th August to allow us to share our celebration of life with Les with the team from the Timber and Working with Wood show. A tribute would not be complete without all the threads that made up the fabric of Les's association with the human spirit through the medium of working with wood.

A SPECIAL TRIBUTE TO LES MILLER

The day after Les's passing, Leon Sadubin suggested to me that it would be a great gesture to celebrate Les's birthday, something friends had been thinking about before the final blow cut short plans for the day. Les had turned 70 on the 17th May, but his state of health and hospitalisation put back any thought of a celebration at that time.

I think all would agree that close to Les's heart was giving other people the opportunity to experience the joy of creative fruition by handing on the knowledge of "how and why" particularly in his chosen field of working with wood. Les would cherish the thought of giving encouragement, the knowledge and wherewithal, to go on and accomplish their dreams.

Les was first and foremost an educator. He met Leon at Asquith High in the Industrial Arts Department where both were teaching woodwork. Leon's inclinations were towards becoming a studio craft woodworker and, when he proposed forming a group of interested professional woodies to exchange information and mutually promote mastercraft woodwork, Les was interested - but with a different twist. One aside for Les was running the Community College evening woodwork hobby course which he shared with Lindsay Skinner.

Les was a founding committee member of the then Woodworkers' of NSW Group. In the early days of exhibitions Les was given leave by the Department of Education to guide school groups through the exhibition. He worked solidly to breathe life into the Woodworkers' Group which later incorporated to become the Woodworkers' Association of NSW Inc. Due to changing circumstance and ill health (his first brush with cancer), Les lost contact with the Association until 1998 when Con Downey invited Les to again take the lead in what was an ailing group. Les put in an extraordinary effort to provide the group with a new direction (always maintaining the basic precepts on which the group was founded).

In 2000 he headed an exhibition of members work at the ABC. He

continued to support the Association and encourage activity through competition right up to his last visit to hospital. Les lead a number of parallel lives: he produced educational videos on aspects of working wood; he was assistant editor of the Australian Woodworker magazine, and was involved with the Timber and Working with Wood show as a popular DIY demonstrator, incidentally promoting stall-holder wares, as always with implicit integrity. Les was active in this role when asked again to lead the Woodworkers' Association.

Patrick O'Reilly, who heads up the Timber and Working with Wood show, enjoyed a strong bond with Les as a friend and councillor. Patrick is passionate about woodwork and sponsors numerous wood skill groups to exhibit at the TWWWS; he is also keen to promote creativity and excellence through the medium of the Gallery Competition. Les was a staunch supporter and promoter of this competition, not just to support Patrick but for its fundamental ideal.

Then there was Les and the Saturday ABC 702 Woodies program. Simon, Pete and Les were a popular trio with a committed audience. Les knew the rules about advertising on air and quite adroitly managed to make an ad look like a comment, so woodie events never failed to get a plug. Time and again after the show Les would return a call because there wasn't time on air, or to give information that was too detailed for the available time - he was just that sort of bloke!

For the August 8 function we were all there, including Sandy and son Paul Miller, the wood clubs represented at the TWWWS, Patrick and Russell from the TWWWS, Art and Stephen Burrows and others from Skills Publishing (The Australian Woodworker), Simon Marnie, Peter Masia and Charlie Herbert from the ABC 702 Saturday Woodies (Charlie Herbert also represented Forests NSW), David Crocker from Carba-Tec, and past and present members of the Woodworkers' Association.

Simon Marnie acted as MC, linking the stories and pictures of close contact with Les from a panel of contributors: Leon Sadubin, Peter Marcia, Art Burrows, Lindsay Skinner, Patrick O'Reilly, Alan Wale and Phil Lake (did I miss any?). Later when we were chatting, Simon called us to attention for a toast to Les: A happy birthday!

Foot note

I don't offer this as an apology (and I hope the clubs will embrace the spirit of inspiration), for, in my planning for this event, my agenda went further. I felt that Les's inspiration should be built upon. My intention was to give Patrick the opportunity to thank the clubs for their participation in the TWWWS in 2005 and for their magnificent contribution to the Gallery Competition. The intention then was that Patrick would go on and roll out plans for 2006. I saw this as fitting as there is an inextricable link in both celebrating our memories of Les and passing the baton so that others may realise their potential. It just happened as it did, it was a satisfying wake!

Phil Lake

Editor Required

After eight years editing this newsletter it is finally time for me to hand over the reigns. New blood is needed.

The task is not overly onerous. Once every two months the newsletter is created and sent to the printers. Once printed it is collected, folded and posted by another member.

A number of willing helpers make the task easier.

Ideally the new editor will have some page layout or design skills and suitable software.

I send the newsletter to the printer as .pdf files, via email. The newsletter is currently created using Quark Xpress. I can supply templates and files for all current ads and regular columns.

Please call Warwick Wright or Michael McGrath if you are capable of taking over this role in the association.

MWE MAJOR WOODWORKING EQUIPMENT PTY LTD

ABN 85 071 918 422
55 Gow Street, Padstow
PO Box 165
Padstow NSW 2211 Australia

Telephone: (02) 9708 3233
Fax: (02) 9708 5556
Email: majwood@tpg.com.au
www.majwood.com.au



Distributors of Jet, Powermatic,
Performax, Freud and CMT
For more details see www.majwood.com.au

Workshop Visit Richard Parsons' Canalpie Furniture

Richard has designed and built a special planing machine adjacent to his log carriage.

This allows him to machine very large pieces.

He has, from an old warehouse in Newcastle, some 70 cubic metres of antique timber, possibly 120 year old, mostly grey and red Ironbark.

This raw material is being used for the structure of the new Twin Creeks golf clubhouse in western Sydney.

The old beams have been subjected to metal detection, de-nailing, resawing and finish planing. Some are made into columns- 300 x 200 and others inot beams 200 x 200.

Further processing and finish polishing to engineering details is now underway.



SAW BLADES, KNIVES AND CUTTERS
TO SUIT EVERY INDUSTRY

Wide Bandsaw Specialists
Stellite[®] and Carbide Tipped

T.C.T and H.S.S. Saw Blades
Carbon and Bi-metal Bandsaws
Router and Boring Bits
Planer and Guillotine Knives

Full Sharpening Service

541 Old Hawkesbury Road, Vineyard
Tel: (02) 9627 5486 Fax: (02) 9627 2707
e-mail: hbsaws@acay.com.au
weekly pick-up and delivery to industry
mail order our speciality

FELDER NSW
Pty Ltd



Special !!!
\$ 130 Set

phone
47351011

Veneers for the Novice-to-the Expert
Exotic imported and local wood veneers
Browse and Shop at

Veneercraft

6 - 8 Bridge Street Padstow NSW 2211

Member of the NSW Marquetry Guild Inc

FRANK KLETZMAYR Phone: (02) 9773 9433
(Director) Fax (02) 9771 5178



ANGLEMAG

Sydney Australia

www.anglemag.com

A revolution in precision angle joinery
NOW available - via phone or the web
Jeff Snell Phone (02) 9683 6052
Fax (02) 9683 6053

ORANGE OIL!?



yes 100% pure, non-toxic oil from the skin of the orange. Feeds, seals, cleans and polishes wood and other surfaces.

"ALL YOU NEED TO KNOW ABOUT WOOD CARE"
HOWARD PRODUCTS (AUST)
175 PEEL STREET
TAMWORTH 2340
FRECALL 1 800 672 646
STOCKISTS AUSTRALIA WIDE

MOTHER OF PEARL & SONS
TRADING

Craftsman quality hardware & refinishing products.

New 54 page colour catalogue out now.
See our new website featuring more than 1500 products detailing sizes, finishes and prices.
Apply for Woodworkers Association discounts

34-36 McLachlan Avenue Rushcutters Bay NSW 2011
Telephone 02 9332 4455 Fax 02 9332 1203
Email info@motherofpearl.com
www.motherofpearl.com

DISCOUNT SHOPPING

HNT Gordon & Co -10%
Classic Plane makers
Alstonville 02 6628 7222

Liberon Enterprises -30%
(Finishing Products) Fyshwick 02 6280 9720

Gifkins Dovetail -10%
(That Jig) Kempsey, 02 6567 4313

Trend Timbers -7.5%
Mulgrave 02 4577 5277

Anagote Timbers -10%
(Timber) Marrickville 02 9558 8444

Total Tools
Wetherill Park 02 9725 3855

A.W Swadling -trade
(Timbers) Rosebery, Rozelle 02 9810 4177

F & K Electrics -10% variable
(Power Tools) Stanmore 02 9518 3900

Laminex Industries
(Sheet products) Caringbah 132 136

As a member of the Woodworkers' Association of NSW you can benefit from discount shopping at a number of "woodie friendly" retail outlets. Your membership card activates this as proof of financial membership.

S.A & S. Stimson Pty. Ltd. -trade prices
(Cabinetmaking Supplies) Balmain 02 9810 1007

Mathews Timber
(Cabinet Timbers) St Marys 02 9833 3100

Nover & Co (Sheets/Kitchen Hardware)
19 Wonderland Drive, Eastern Creek 2766.
Ph 1300 668 371

Hare & Forbes -variable
(Wood Machinery) Northmead 02 9890 9111

Warringah Timber
(Timber Supplier) Dee Why 02 9981 3733

Brims Wood Panels Pty. Ltd.
(Sheet Materials) Fairfield 02 9892 1655

Mother of Pearl & Sons Trading -10%
(hardware) Rushcutters Bay 02 9332 4455

Feast Watson, Head Office
Scoresby Vic. 1800 355 003

Howard Products
Tamworth 1800 672 646

Veneercraft -10%
Padstow 02 9773 9433

CARBA-TEC (-5% - 7.5 %)
Woodworking tools & equipment,
113 Station Rd Auburn NSW,
1800 683 583 or 9648 6446.
Membership Card must be shown

Henry Bros Saws -trade
Vineyard 029627 5486

Multiple Angle Guide Pty Ltd
(AngleMag) -10%
Oatlands 02 9683 6052